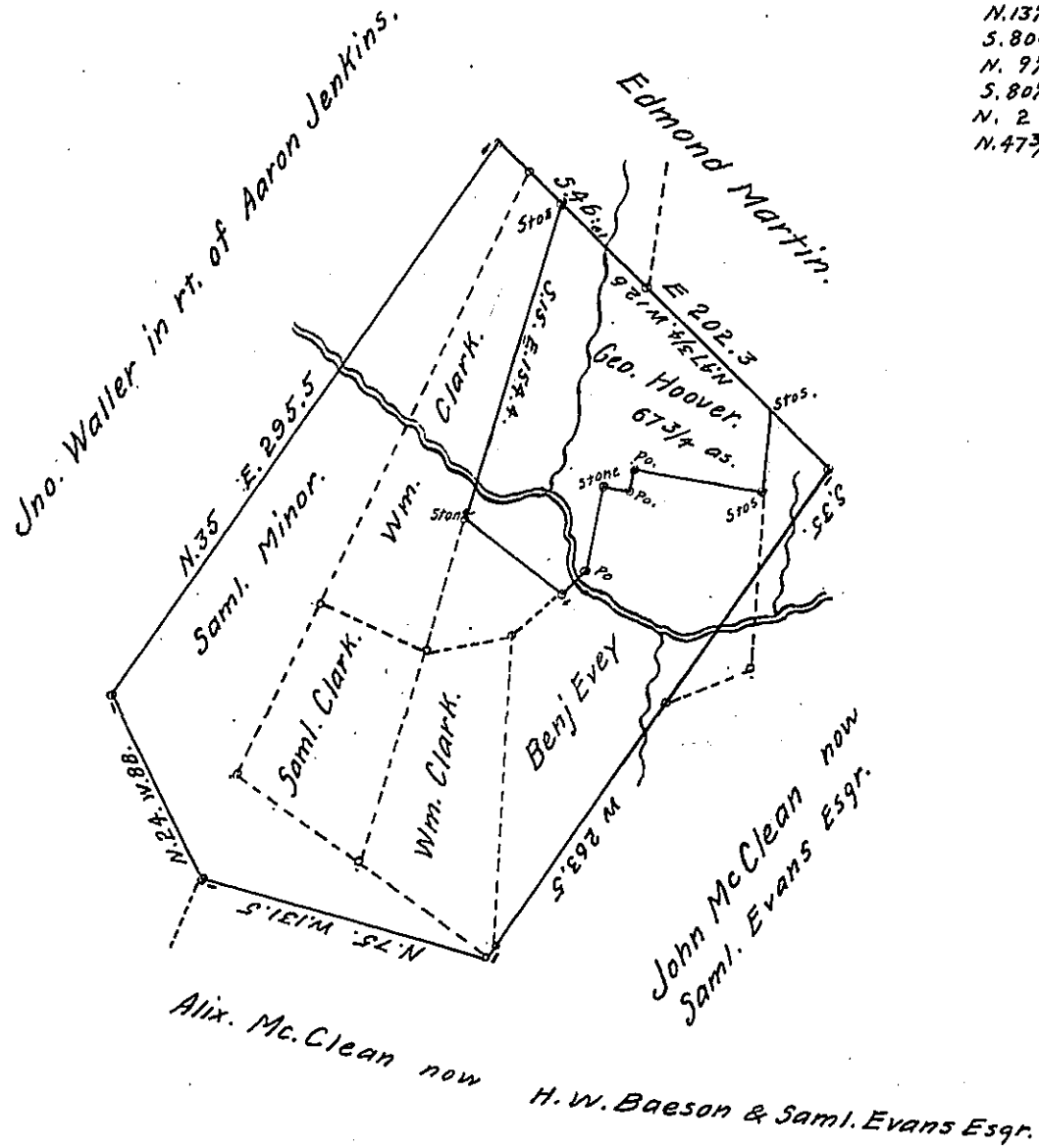


Remainder of Hoover's lines.
 S 57 1/2 E 50.3
 N 35 1/8 E 20.2
 N 13 1/8 E 38.1
 S 80 3/4 E 8.3
 N 9 1/4 E 12.5
 S 80 1/4 E 66.6
 N 2 E 38.3 then
 N 47 3/4 W 8.



A draft—the land described in Andrew Foutz location No. 1520 of 3d. Apl. 1769. His the same land which was surveyed 15th. Sepr. 1769. to John Waller pr. order No. 3472 of 14th. June 1769. Hoover's part 67 3/4 as. is unpatented, the other pieces have been surveyed to Benjamin Evey, William Clark, Samuel Clark & Samuel Minor as parts of John Waller and on said be all patented. Resurveyed 25th. Apl. 1829. and now returned on Andw. Foutz location. The land is now owned by Samuel Clark and George Hoover on the premises in Union Township Fayette Co. The yellow line shows a small interference of John McClean's warrant of February 1786. To the board of Property May 1829. S. Lewis, D.S. of Pennsylvania. No. 3472 part Patd. J. McClean Pat.

IN TESTIMONY that the above is a copy of the original remaining on file in the Department of Internal Affairs of Pennsylvania, made conformably to an Act of Assembly approved the 16th day of February, 1833, I have hereunto set my Hand and caused the Seal of said Department to be affixed at Harrisburg, this eighth day of August 1908.

Henry Howell
 Secretary of Internal Affairs.